

1982 UNITED NATIONS CONVENTION ON THE LAW OF THE SEA



**Submission by the Cook Islands to the Commission on the Limits of the
Continental Shelf concerning the Manihiki Plateau**

ADDENDUM TO THE EXECUTIVE SUMMARY

August 2012

CKI-ES-ADD-DOC



1. The following Addendum to the Executive Summary of the Submission by the Cook Islands to the Commission on the Limits of the Continental Shelf concerning the Manihiki Plateau has been prepared by the Government of the Cook Islands for due publication consistent with a decision of the Commission on the Limits of the Continental Shelf of 6 August 2012.

2. The modifications to the Executive Summary contained in this Addendum comprise a Table listing the points defining the revised outer limit of the Cook Islands extended continental shelf (Decimal Degrees) (Annex 1 ADD), and two illustrative maps presented as Figure 1 and Figure 2 respectively.

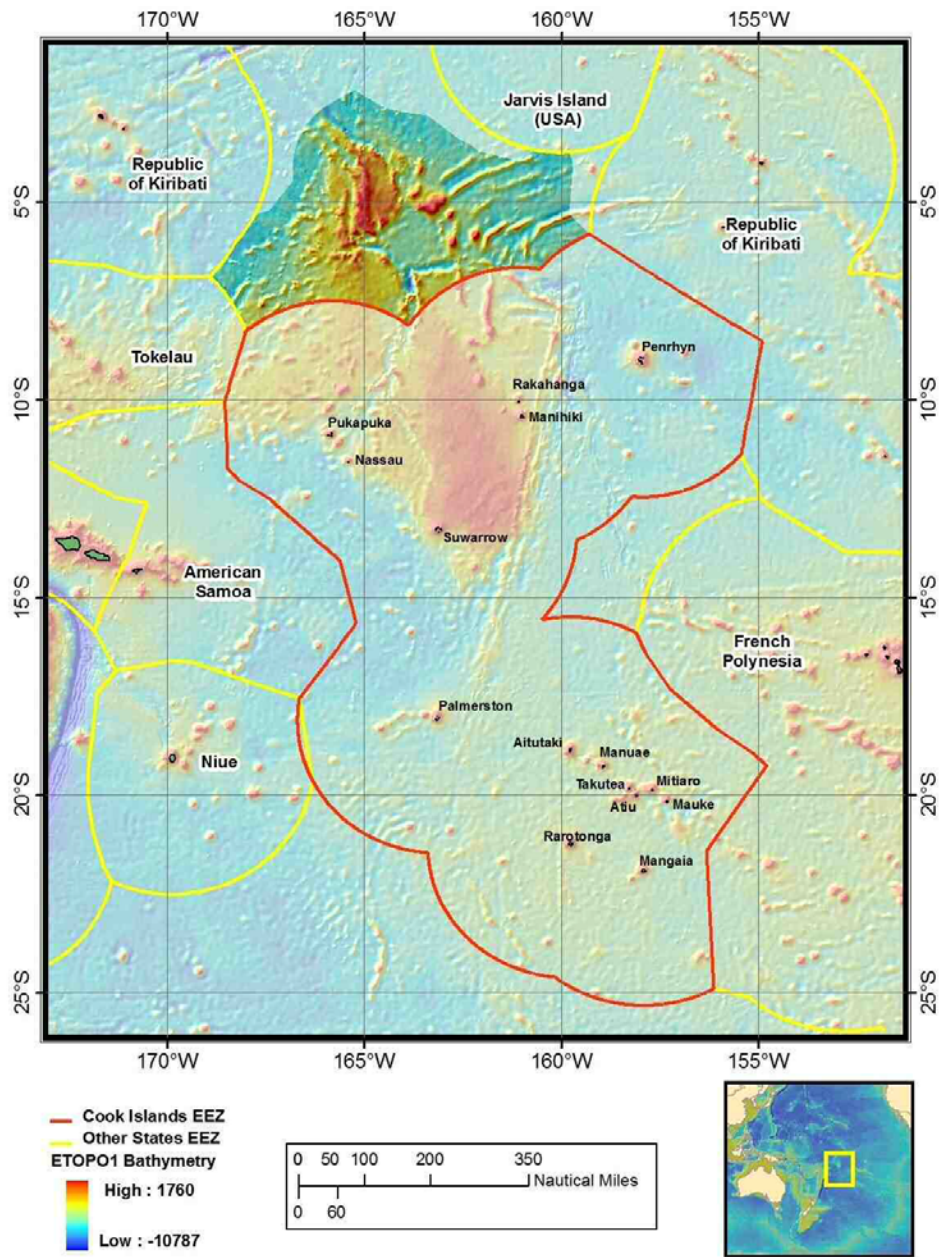


Figure 1 The outer limit of the continental shelf of the Cook Islands in the Manihiki Plateau region showing the outer limit line and area of extended continental shelf

CKI-ES-ADD-DOC-MAP 1

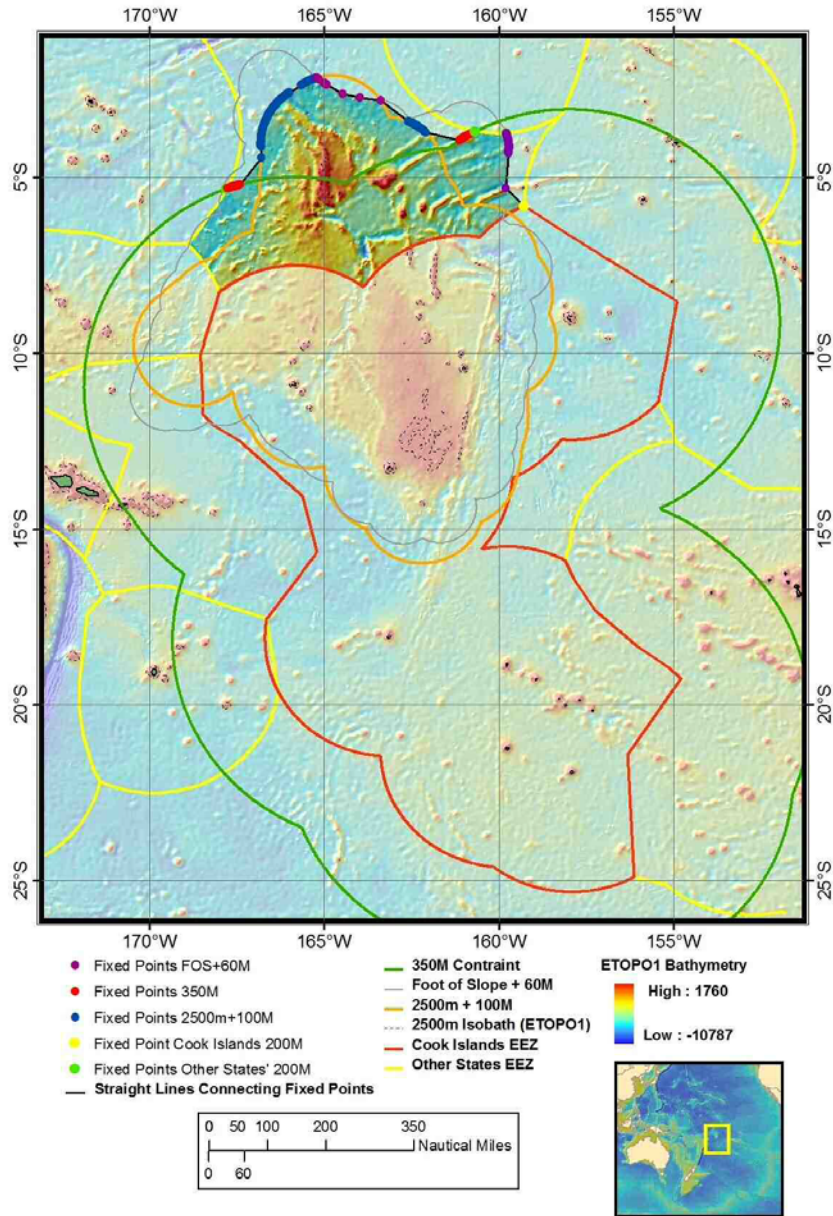


Figure 1

The outer limit of the continental shelf of the Cook Islands in the Manihiki Plateau region showing the outer limit line and the provisions of Article 76 invoked.

CKI-ES-ADD-DOC-MAP 2



ANNEX 1 ADD

Table listing the points defining the revised outer limit of the Cook Islands extended continental shelf (Decimal Degrees)

Fixed Point	Longitude	Latitude	Distance (M)	Method (Article 76)
NORTHERN OUTER LIMIT LINE				
CI_ECS_FP1	-167.781464	-5.309752	0.0	Other State 200M
CI_ECS_FP2	-167.760590	-5.302558	1.3	350M Constraint
CI_ECS_FP3	-167.744766	-5.297169	1.0	350M Constraint
CI_ECS_FP4	-167.728928	-5.291824	1.0	350M Constraint
CI_ECS_FP5	-167.713089	-5.286523	1.0	350M Constraint
CI_ECS_FP6	-167.697220	-5.281267	1.0	350M Constraint
CI_ECS_FP7	-167.681351	-5.276057	1.0	350M Constraint
CI_ECS_FP8	-167.665451	-5.270891	1.0	350M Constraint
CI_ECS_FP9	-167.649551	-5.265769	1.0	350M Constraint
CI_ECS_FP10	-167.633621	-5.260695	1.0	350M Constraint
CI_ECS_FP11	-167.617691	-5.255663	1.0	350M Constraint
CI_ECS_FP12	-167.601746	-5.250679	1.0	350M Constraint
CI_ECS_FP13	-167.585770	-5.245737	1.0	350M Constraint
CI_ECS_FP14	-167.569794	-5.240843	1.0	350M Constraint
CI_ECS_FP15	-167.553802	-5.235993	1.0	350M Constraint
CI_ECS_FP16	-167.537811	-5.231186	1.0	350M Constraint
CI_ECS_FP17	-167.521790	-5.226427	1.0	350M Constraint
CI_ECS_FP18	-167.505753	-5.221713	1.0	350M Constraint
CI_ECS_FP19	-167.489716	-5.217045	1.0	350M Constraint
CI_ECS_FP20	-167.473663	-5.212421	1.0	350M Constraint
CI_ECS_FP21	-167.457596	-5.207844	1.0	350M Constraint
CI_ECS_FP22	-167.441513	-5.203310	1.0	350M Constraint
CI_ECS_FP23	-167.425415	-5.198824	1.0	350M Constraint
CI_ECS_FP24	-167.409302	-5.194382	1.0	350M Constraint
CI_ECS_FP25	-167.393188	-5.189987	1.0	350M Constraint



CI_ECS_FP26	-166.791534	-4.421422	58.3	2500m + 100M
CI_ECS_FP27	-166.803574	-4.123503	17.8	2500m + 100M
CI_ECS_FP28	-166.804413	-4.106775	1.0	2500m + 100M
CI_ECS_FP29	-166.805084	-4.090041	1.0	2500m + 100M
CI_ECS_FP30	-166.805603	-4.073301	1.0	2500m + 100M
CI_ECS_FP31	-166.805939	-4.056554	1.0	2500m + 100M
CI_ECS_FP32	-166.806107	-4.039807	1.0	2500m + 100M
CI_ECS_FP33	-166.806107	-4.023059	1.0	2500m + 100M
CI_ECS_FP34	-166.805954	-4.006311	1.0	2500m + 100M
CI_ECS_FP35	-166.805618	-3.989568	1.0	2500m + 100M
CI_ECS_FP36	-166.805130	-3.972826	1.0	2500m + 100M
CI_ECS_FP37	-166.804474	-3.956090	1.0	2500m + 100M
CI_ECS_FP38	-166.803635	-3.939362	1.0	2500m + 100M
CI_ECS_FP39	-166.802643	-3.922644	1.0	2500m + 100M
CI_ECS_FP40	-166.801483	-3.905936	1.0	2500m + 100M
CI_ECS_FP41	-166.800156	-3.889240	1.0	2500m + 100M
CI_ECS_FP42	-166.798660	-3.872560	1.0	2500m + 100M
CI_ECS_FP43	-166.797012	-3.855895	1.0	2500m + 100M
CI_ECS_FP44	-166.795181	-3.839247	1.0	2500m + 100M
CI_ECS_FP45	-166.793198	-3.822617	1.0	2500m + 100M
CI_ECS_FP46	-166.791031	-3.806010	1.0	2500m + 100M
CI_ECS_FP47	-166.788712	-3.789424	1.0	2500m + 100M
CI_ECS_FP48	-166.786240	-3.772863	1.0	2500m + 100M
CI_ECS_FP49	-166.783585	-3.756327	1.0	2500m + 100M
CI_ECS_FP50	-166.780777	-3.739820	1.0	2500m + 100M
CI_ECS_FP51	-166.777786	-3.723339	1.0	2500m + 100M
CI_ECS_FP52	-166.774643	-3.706892	1.0	2500m + 100M
CI_ECS_FP53	-166.771347	-3.690474	1.0	2500m + 100M
CI_ECS_FP54	-166.767883	-3.674094	1.0	2500m + 100M
CI_ECS_FP55	-166.764252	-3.657748	1.0	2500m + 100M
CI_ECS_FP56	-166.760452	-3.641437	1.0	2500m + 100M
CI_ECS_FP57	-166.756500	-3.625167	1.0	2500m + 100M
CI_ECS_FP58	-166.752380	-3.608937	1.0	2500m + 100M
CI_ECS_FP59	-166.748108	-3.592749	1.0	2500m + 100M
CI_ECS_FP60	-166.743668	-3.576607	1.0	2500m + 100M
CI_ECS_FP61	-166.739059	-3.560507	1.0	2500m + 100M
CI_ECS_FP62	-166.734314	-3.544456	1.0	2500m + 100M
CI_ECS_FP63	-166.729385	-3.528453	1.0	2500m + 100M
CI_ECS_FP64	-166.724304	-3.512501	1.0	2500m + 100M
CI_ECS_FP65	-166.719070	-3.496598	1.0	2500m + 100M
CI_ECS_FP66	-166.713684	-3.480752	1.0	2500m + 100M



CI_ECS_FP67	-166.708130	-3.464959	1.0	2500m + 100M
CI_ECS_FP68	-166.702423	-3.449223	1.0	2500m + 100M
CI_ECS_FP69	-166.696564	-3.433545	1.0	2500m + 100M
CI_ECS_FP70	-166.690552	-3.417926	1.0	2500m + 100M
CI_ECS_FP71	-166.684372	-3.402369	1.0	2500m + 100M
CI_ECS_FP72	-166.678055	-3.386873	1.0	2500m + 100M
CI_ECS_FP73	-166.671570	-3.371442	1.0	2500m + 100M
CI_ECS_FP74	-166.664932	-3.356079	1.0	2500m + 100M
CI_ECS_FP75	-166.658142	-3.340781	1.0	2500m + 100M
CI_ECS_FP76	-166.651215	-3.325553	1.0	2500m + 100M
CI_ECS_FP77	-166.644119	-3.310394	1.0	2500m + 100M
CI_ECS_FP78	-166.637085	-3.295211	1.0	2500m + 100M
CI_ECS_FP79	-166.629898	-3.280099	1.0	2500m + 100M
CI_ECS_FP80	-166.622559	-3.265059	1.0	2500m + 100M
CI_ECS_FP81	-166.615082	-3.250096	1.0	2500m + 100M
CI_ECS_FP82	-166.607452	-3.235207	1.0	2500m + 100M
CI_ECS_FP83	-166.599670	-3.220397	1.0	2500m + 100M
CI_ECS_FP84	-166.591736	-3.205664	1.0	2500m + 100M
CI_ECS_FP85	-166.583664	-3.191014	1.0	2500m + 100M
CI_ECS_FP86	-166.575455	-3.176442	1.0	2500m + 100M
CI_ECS_FP87	-166.567093	-3.161956	1.0	2500m + 100M
CI_ECS_FP88	-166.558578	-3.147554	1.0	2500m + 100M
CI_ECS_FP89	-166.549942	-3.133237	1.0	2500m + 100M
CI_ECS_FP90	-166.541153	-3.119008	1.0	2500m + 100M
CI_ECS_FP91	-166.532211	-3.104869	1.0	2500m + 100M
CI_ECS_FP92	-166.523148	-3.090820	1.0	2500m + 100M
CI_ECS_FP93	-166.513931	-3.076863	1.0	2500m + 100M
CI_ECS_FP94	-166.504593	-3.062997	1.0	2500m + 100M
CI_ECS_FP95	-166.495102	-3.049230	1.0	2500m + 100M
CI_ECS_FP96	-166.485489	-3.035555	1.0	2500m + 100M
CI_ECS_FP97	-166.475723	-3.021979	1.0	2500m + 100M
CI_ECS_FP98	-166.465836	-3.008500	1.0	2500m + 100M
CI_ECS_FP99	-166.455811	-2.995121	1.0	2500m + 100M
CI_ECS_FP100	-166.445663	-2.981845	1.0	2500m + 100M
CI_ECS_FP101	-166.435364	-2.968673	1.0	2500m + 100M
CI_ECS_FP102	-166.424957	-2.955602	1.0	2500m + 100M
CI_ECS_FP103	-166.414398	-2.942637	1.0	2500m + 100M
CI_ECS_FP104	-166.403732	-2.929778	1.0	2500m + 100M
CI_ECS_FP105	-166.392929	-2.917027	1.0	2500m + 100M
CI_ECS_FP106	-166.382004	-2.904387	1.0	2500m + 100M
CI_ECS_FP107	-166.370941	-2.891855	1.0	2500m + 100M



CI_ECS_FP108	-166.359772	-2.879436	1.0	2500m + 100M
CI_ECS_FP109	-166.348465	-2.867130	1.0	2500m + 100M
CI_ECS_FP110	-166.337051	-2.854939	1.0	2500m + 100M
CI_ECS_FP111	-166.325500	-2.842860	1.0	2500m + 100M
CI_ECS_FP112	-166.313843	-2.830901	1.0	2500m + 100M
CI_ECS_FP113	-166.302063	-2.819057	1.0	2500m + 100M
CI_ECS_FP114	-166.290176	-2.807333	1.0	2500m + 100M
CI_ECS_FP115	-166.278168	-2.795730	1.0	2500m + 100M
CI_ECS_FP116	-166.266037	-2.784247	1.0	2500m + 100M
CI_ECS_FP117	-166.253799	-2.772888	1.0	2500m + 100M
CI_ECS_FP118	-166.241440	-2.761652	1.0	2500m + 100M
CI_ECS_FP119	-166.228989	-2.750539	1.0	2500m + 100M
CI_ECS_FP120	-166.216415	-2.739552	1.0	2500m + 100M
CI_ECS_FP121	-166.203735	-2.728692	1.0	2500m + 100M
CI_ECS_FP122	-166.190948	-2.717960	1.0	2500m + 100M
CI_ECS_FP123	-166.178055	-2.707357	1.0	2500m + 100M
CI_ECS_FP124	-166.165054	-2.696885	1.0	2500m + 100M
CI_ECS_FP125	-166.151947	-2.686542	1.0	2500m + 100M
CI_ECS_FP126	-166.138748	-2.676333	1.0	2500m + 100M
CI_ECS_FP127	-166.125443	-2.666256	1.0	2500m + 100M
CI_ECS_FP128	-166.112045	-2.656315	1.0	2500m + 100M
CI_ECS_FP129	-166.098541	-2.646506	1.0	2500m + 100M
CI_ECS_FP130	-166.084946	-2.636835	1.0	2500m + 100M
CI_ECS_FP131	-166.071259	-2.627300	1.0	2500m + 100M
CI_ECS_FP132	-166.057465	-2.617904	1.0	2500m + 100M
CI_ECS_FP133	-166.043579	-2.608647	1.0	2500m + 100M
CI_ECS_FP134	-166.029617	-2.599529	1.0	2500m + 100M
CI_ECS_FP135	-166.015549	-2.590553	1.0	2500m + 100M
CI_ECS_FP136	-166.001404	-2.581718	1.0	2500m + 100M
CI_ECS_FP137	-165.987167	-2.573024	1.0	2500m + 100M
CI_ECS_FP138	-165.651077	-2.357871	23.9	2500m + 100M
CI_ECS_FP139	-165.637070	-2.348824	1.0	2500m + 100M
CI_ECS_FP140	-165.622971	-2.339914	1.0	2500m + 100M
CI_ECS_FP141	-165.608780	-2.331149	1.0	2500m + 100M
CI_ECS_FP142	-165.594498	-2.322527	1.0	2500m + 100M
CI_ECS_FP143	-165.580139	-2.314049	1.0	2500m + 100M
CI_ECS_FP144	-165.565704	-2.305715	1.0	2500m + 100M
CI_ECS_FP145	-165.551178	-2.297526	1.0	2500m + 100M
CI_ECS_FP146	-165.536575	-2.289483	1.0	2500m + 100M
CI_ECS_FP147	-165.521881	-2.281590	1.0	2500m + 100M
CI_ECS_FP148	-165.507126	-2.273844	1.0	2500m + 100M



CI_ECS_FP149	-165.492279	-2.266244	1.0	2500m + 100M
CI_ECS_FP150	-165.477371	-2.258795	1.0	2500m + 100M
CI_ECS_FP151	-165.462387	-2.251496	1.0	2500m + 100M
CI_ECS_FP152	-165.447327	-2.244348	1.0	2500m + 100M
CI_ECS_FP153	-165.432205	-2.237351	1.0	2500m + 100M
CI_ECS_FP154	-165.417007	-2.230508	1.0	2500m + 100M
CI_ECS_FP155	-165.401749	-2.223817	1.0	2500m + 100M
CI_ECS_FP156	-165.386414	-2.217281	1.0	2500m + 100M
CI_ECS_FP157	-165.371017	-2.210896	1.0	2500m + 100M
CI_ECS_FP158	-165.355560	-2.204670	1.0	2500m + 100M
CI_ECS_FP159	-165.340042	-2.198597	1.0	2500m + 100M
CI_ECS_FP160	-165.324478	-2.192680	1.0	2500m + 100M
CI_ECS_FP161	-165.308838	-2.186921	1.0	2500m + 100M
CI_ECS_FP162	-165.293152	-2.181318	1.0	2500m + 100M
CI_ECS_FP163	-165.277405	-2.175876	1.0	2500m + 100M
CI_ECS_FP164	-165.261612	-2.170589	1.0	2500m + 100M
CI_ECS_FP165	-165.245758	-2.165463	1.0	2500m + 100M
CI_ECS_FP166	-165.229858	-2.160497	1.0	2500m + 100M
CI_ECS_FP167	-165.213913	-2.155689	1.0	2500m + 100M
CI_ECS_FP168	-165.211121	-2.154880	0.2	FOS + 60M
CI_ECS_FP169	-165.195755	-2.164812	1.1	FOS + 60M
CI_ECS_FP170	-165.181900	-2.174120	1.0	FOS + 60M
CI_ECS_FP171	-165.168213	-2.183654	1.0	FOS + 60M
CI_ECS_FP172	-165.154694	-2.193419	1.0	FOS + 60M
CI_ECS_FP173	-165.001465	-2.293346	11.0	FOS + 60M
CI_ECS_FP174	-164.987411	-2.302317	1.0	FOS + 60M
CI_ECS_FP175	-164.973495	-2.311523	1.0	FOS + 60M
CI_ECS_FP176	-164.959747	-2.320961	1.0	FOS + 60M
CI_ECS_FP177	-164.946136	-2.330630	1.0	FOS + 60M
CI_ECS_FP178	-164.932709	-2.340522	1.0	FOS + 60M
CI_ECS_FP179	-164.919434	-2.350640	1.0	FOS + 60M
CI_ECS_FP180	-164.458237	-2.607581	31.7	FOS + 60M
CI_ECS_FP181	-163.966293	-2.712581	30.2	FOS + 60M
CI_ECS_FP182	-163.381454	-2.797306	35.5	FOS + 60M
CI_ECS_FP183	-162.595490	-3.390193	59.0	2500m + 100M
CI_ECS_FP184	-162.580032	-3.396456	1.0	2500m + 100M
CI_ECS_FP185	-162.564636	-3.402874	1.0	2500m + 100M
CI_ECS_FP186	-162.549301	-3.409446	1.0	2500m + 100M
CI_ECS_FP187	-162.534042	-3.416172	1.0	2500m + 100M
CI_ECS_FP188	-162.518845	-3.423051	1.0	2500m + 100M
CI_ECS_FP189	-162.503723	-3.430083	1.0	2500m + 100M



CI_ECS_FP190	-162.488663	-3.437264	1.0	2500m + 100M
CI_ECS_FP191	-162.473679	-3.444597	1.0	2500m + 100M
CI_ECS_FP192	-162.458771	-3.452080	1.0	2500m + 100M
CI_ECS_FP193	-162.443924	-3.459713	1.0	2500m + 100M
CI_ECS_FP194	-162.429169	-3.467491	1.0	2500m + 100M
CI_ECS_FP195	-162.414490	-3.475419	1.0	2500m + 100M
CI_ECS_FP196	-162.399887	-3.483496	1.0	2500m + 100M
CI_ECS_FP197	-162.385361	-3.491715	1.0	2500m + 100M
CI_ECS_FP198	-162.370926	-3.500082	1.0	2500m + 100M
CI_ECS_FP199	-162.356567	-3.508592	1.0	2500m + 100M
CI_ECS_FP200	-162.342300	-3.517246	1.0	2500m + 100M
CI_ECS_FP201	-162.328110	-3.526043	1.0	2500m + 100M
CI_ECS_FP202	-162.314026	-3.534983	1.0	2500m + 100M
CI_ECS_FP203	-162.300018	-3.544061	1.0	2500m + 100M
CI_ECS_FP204	-162.286102	-3.553282	1.0	2500m + 100M
CI_ECS_FP205	-162.272278	-3.562639	1.0	2500m + 100M
CI_ECS_FP206	-162.258545	-3.572137	1.0	2500m + 100M
CI_ECS_FP207	-162.244904	-3.581772	1.0	2500m + 100M
CI_ECS_FP208	-162.231369	-3.591542	1.0	2500m + 100M
CI_ECS_FP209	-162.217926	-3.601448	1.0	2500m + 100M
CI_ECS_FP210	-162.204590	-3.611489	1.0	2500m + 100M
CI_ECS_FP211	-162.191345	-3.621660	1.0	2500m + 100M
CI_ECS_FP212	-162.178207	-3.631968	1.0	2500m + 100M
CI_ECS_FP213	-162.165161	-3.642405	1.0	2500m + 100M
CI_ECS_FP214	-162.152237	-3.652971	1.0	2500m + 100M
CI_ECS_FP215	-162.139404	-3.663668	1.0	2500m + 100M
CI_ECS_FP216	-162.126678	-3.674494	1.0	2500m + 100M
CI_ECS_FP217	-162.114075	-3.685445	1.0	2500m + 100M
CI_ECS_FP218	-162.101562	-3.696523	1.0	2500m + 100M
CI_ECS_FP219	-162.089172	-3.707725	1.0	2500m + 100M
CI_ECS_FP220	-161.116226	-3.923731	59.8	350M Constraint
CI_ECS_FP221	-161.101990	-3.915020	1.0	350M Constraint
CI_ECS_FP222	-161.087723	-3.906347	1.0	350M Constraint
CI_ECS_FP223	-161.073425	-3.897717	1.0	350M Constraint
CI_ECS_FP224	-161.059113	-3.889127	1.0	350M Constraint
CI_ECS_FP225	-161.044769	-3.880579	1.0	350M Constraint
CI_ECS_FP226	-161.030411	-3.872070	1.0	350M Constraint
CI_ECS_FP227	-161.016022	-3.863602	1.0	350M Constraint
CI_ECS_FP228	-161.001617	-3.855177	1.0	350M Constraint
CI_ECS_FP229	-160.987183	-3.846792	1.0	350M Constraint
CI_ECS_FP230	-160.972717	-3.838449	1.0	350M Constraint



CI_ECS_FP231	-160.958237	-3.830145	1.0	350M Constraint
CI_ECS_FP232	-160.943741	-3.821882	1.0	350M Constraint
CI_ECS_FP233	-160.929214	-3.813662	1.0	350M Constraint
CI_ECS_FP234	-160.914658	-3.805482	1.0	350M Constraint
CI_ECS_FP235	-160.900085	-3.797343	1.0	350M Constraint
CI_ECS_FP236	-160.885498	-3.789246	1.0	350M Constraint
CI_ECS_FP237	-160.870865	-3.781190	1.0	350M Constraint
CI_ECS_FP238	-160.856232	-3.773177	1.0	350M Constraint
CI_ECS_FP239	-160.841568	-3.765204	1.0	350M Constraint
CI_ECS_FP240	-160.826889	-3.757275	1.0	350M Constraint
CI_ECS_FP241	-160.812180	-3.749385	1.0	350M Constraint
CI_ECS_FP242	-160.797455	-3.741537	1.0	350M Constraint
CI_ECS_FP243	-160.782700	-3.733733	1.0	350M Constraint
CI_ECS_FP244	-160.767929	-3.725968	1.0	350M Constraint
CI_ECS_FP245	-160.753128	-3.718247	1.0	350M Constraint
CI_ECS_FP246	-160.738312	-3.710567	1.0	350M Constraint
CI_ECS_FP247	-160.723480	-3.702930	1.0	350M Constraint
CI_ECS_FP248	-160.708618	-3.695336	1.0	350M Constraint
CI_ECS_FP249	-160.693741	-3.687785	1.0	350M Constraint
CI_ECS_FP250	-160.678848	-3.680272	1.0	350M Constraint
CI_ECS_FP251	-160.669357	-3.675528	0.6	Other State 200M
REVISED EASTERN OUTER LIMIT LINE				
CI_ECS_revFP252	-159.790649	-3.727907	0.84	Other State 200M
CI_ECS_revFP253	-159.789581	-3.730445	0.16	FOS + 60M
CI_ECS_revFP254	-159.783295	-3.745957	1.00	FOS + 60M
CI_ECS_revFP255	-159.777268	-3.761574	1.00	FOS + 60M
CI_ECS_revFP256	-159.771500	-3.777288	1.00	FOS + 60M
CI_ECS_revFP257	-159.765991	-3.793096	1.00	FOS + 60M
CI_ECS_revFP258	-159.760742	-3.808994	1.00	FOS + 60M
CI_ECS_revFP259	-159.755768	-3.824978	1.00	FOS + 60M
CI_ECS_revFP260	-159.751053	-3.841043	1.00	FOS + 60M
CI_ECS_revFP261	-159.746597	-3.857185	1.00	FOS + 60M
CI_ECS_revFP262	-159.742432	-3.873399	1.00	FOS + 60M
CI_ECS_revFP263	-159.738510	-3.889680	1.00	FOS + 60M
CI_ECS_revFP264	-159.734879	-3.906026	1.00	FOS + 60M
CI_ECS_revFP265	-159.731506	-3.922428	1.00	FOS + 60M
CI_ECS_revFP266	-159.728409	-3.938886	1.00	FOS + 60M
CI_ECS_revFP267	-159.725586	-3.955393	1.00	FOS + 60M
CI_ECS_revFP268	-159.723038	-3.971944	1.00	FOS + 60M



CI_ECS_revFP269	-159.720764	-3.988537	1.00	FOS + 60M
CI_ECS_revFP270	-159.718765	-4.005165	1.00	FOS + 60M
CI_ECS_revFP271	-159.717056	-4.021823	1.00	FOS + 60M
CI_ECS_revFP272	-159.715607	-4.038509	1.00	FOS + 60M
CI_ECS_revFP273	-159.714432	-4.055217	1.00	FOS + 60M
CI_ECS_revFP274	-159.713547	-4.071941	1.00	FOS + 60M
CI_ECS_revFP275	-159.712936	-4.088678	1.00	FOS + 60M
CI_ECS_revFP276	-159.712601	-4.105423	1.00	FOS + 60M
CI_ECS_revFP277	-159.712540	-4.122170	1.00	FOS + 60M
CI_ECS_revFP278	-159.712769	-4.138918	1.00	FOS + 60M
CI_ECS_revFP279	-159.713257	-4.155659	1.00	FOS + 60M
CI_ECS_revFP280	-159.714035	-4.172389	1.00	FOS + 60M
CI_ECS_revFP281	-159.715088	-4.189104	1.00	FOS + 60M
CI_ECS_revFP282	-159.716431	-4.205799	1.00	FOS + 60M
CI_ECS_revFP283	-159.718033	-4.222468	1.00	FOS + 60M
CI_ECS_revFP284	-159.719925	-4.239110	1.00	FOS + 60M
CI_ECS_revFP285	-159.722076	-4.255718	1.00	FOS + 60M
CI_ECS_revFP286	-159.724518	-4.272287	1.00	FOS + 60M
CI_ECS_revFP287	-159.727234	-4.288811	1.00	FOS + 60M
CI_ECS_revFP288	-159.730209	-4.305289	1.00	FOS + 60M
CI_ECS_revFP289	-159.812485	-5.295332	59.32	FOS + 60M
CI_ECS_revFP290	-159.269409	-5.798277	44.24	Cook Islands EEZ

CKI-ES-ADD-DOC-ANNEX 1